

BUILT Heritage

In previous centuries the mining of rock salt and brine (salt water) pumping made **Northwich** very unstable underground. The town was renowned for the collapse of buildings which disappeared into massive craters formed by the collapse of the underground mines. It was these dramatic incidents that created the flashes here and in Winsford.

Many of Northwich's timbered buildings were built to be jacked up and down to allow for the frequent flood conditions and are still part of the thriving and newly regenerated retail and leisure area.

The Lion Salt Works Museum reopened in 2015 after a £10m restoration, since then it has won several awards. The museum tells the story of salt and its impact on people through interactive installations and oral histories from local workers.

Don't miss the magnificent **Anderton Boat Lift**, an important Scheduled Monument in the area and the **world's first hydraulic lift**. It was built in 1875 to support the waterways of Cheshire made increasingly busy by the salt industry.

Murgatroyd's Brine Pump, Middlewich is being slowly brought back to life through restoration. The brine pumped here was of very high quality, enabling the works to expand to become one of Middlewich's most important employers until the 1970s. This is the last and most complete set of pumps in situ and can be visited on special pre-booked tours run by the town council. Call **01606 833434**.



Middlewich Brine Pump



Three Locks, Middlewich

How to get HERE...

Marbury Country Park, Anderton Boat Lift and Lion Saltworks Museum are all signposted from Northwich and from J10 of the M56.

cheshire traveline 0871 200 22 33

traveline.info

saltscape.co.uk

northwichwoodlands.org.uk

weaverparkway.co.uk

Saltscape was a Landscape Partnership scheme funded by the National Lottery's Heritage Lottery Fund. It ran projects to enhance, restore and protect the salt landscape and history of Frodsham, Northwich, Winsford and Middlewich. Photography: Nick Jones, Pete Lennon, Saul Burton. Design: Lemondrop Creative.



Printed on 100%
Recycled Paper



FIELD NOTES



Crane's bill



Marsh Orchid



Dingy Skipper

AN EXPLORATION INTO THE **BUILT** AND **NATURAL** HERITAGE OF OUR UNIQUE
SALT LANDSCAPE





Marbury Park

Bumblebee
(*Bombus*)



Common Blue Damselfly



Acorns
(*Quercus*)



Great Crested Grebe



Notonecta maculata



Broad Bodied Chaser

What is the SALTSCAPE?

The Saltscape is the area of Cheshire's Weaver valley that has been shaped by the salt that was laid down here **millions of years ago** when the area was covered in seawater.

Over time, salt brought the Iron age and Roman communities, mining and then chemical industries. And has shaped the **landscapes, natural environment, buildings and communities** that surround it.

Middlewich still produces white salt for food and industry, and the rock salt mine at Winsford is the UK's largest, producing the grit to de-ice our roads in winter.



Buy rock salt in the museum shop at the Lion Salt Works...



NATURAL Heritage

The presence of salt has shaped the natural landscape and produced a distinct mix of habitats and wildlife.

The reshaping of the river Weaver to make it easier to transport salt created backwater river channels, ox-bows lakes, wetlands, grassland sites and areas of semi-natural ancient woodland in steep valley sides or 'cloughs'.

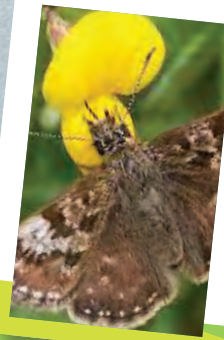
In Northwich Woodlands you'll see salt marsh vegetation such as stiff saltmarsh grass and sea spurrey thriving. You'd normally only expect to find these in coastal areas.

Ashton and Neumann's Flashes and Winsford Flashes today are crucial habitats for migratory and wading birds. Visit the areas to find out more about the regular walks, talks and courses run here by the Rangers and other local experts.

Grey Heron
(*Ardea cinerea*)



NATURE FACT FILE



RANGER DAVE SAYS:

'Lime beds' in Northwich Woodlands (created by waste from soda ash production) provide the perfect habitat for plants such as marsh orchid and bird's-foot trefoil. These are an important food source for the dingy skipper, a tiny butterfly with shimmering brown and grey markings.





Explore our **NATURAL** and **BUILT** Heritage

NATURE FACT FILE

RANGER DAVE SAYS:

Unique to this area are the 'flashes'. These artificial water bodies were produced when the land collapsed (due to subsidence of underground salt mines) and filled with water.



WALKING ROUTES

You can now walk the **Saltscape Trail** linking Anderton Boat Lift and Lion Saltworks Museum. Explore the villages of Weaverham and Acton Bridge through the **Petal Walks**. Enjoy the wildlife haven of **Marshall's Arm Nature Reserve, Hartford**, walk all the way from Northwich to Winsford along **Vale Royal Towpath** and hear stories from Winsford's industrial past guiding you through the **Weaver Parkway History Trail**. Information on all these routes is available to download from saltscape.co.uk

You'll find **The Weaver Way** long distance footpath and Cycleway passes through Winsford Flashes. Stretching from Frodsham in the north to Audlem, the route follows the River Weaver and Navigation, as well as the Trent and Mersey and Shropshire Union Canals.

For more routes visit gps-routes.co.uk

VISIT

The award winning **Lion Salt Works Museum**, where you can learn more about the history of the Saltscape. It has a large industrially-themed play area, butterfly garden, shop, café and free parking.

The magnificent **Anderton Boat Lift**, is one of the most striking monuments on the British Canal network. Take a 'top of the world tour', enjoy the brand new play area, shop and café. Visit andertonboatlift.co.uk for more costs and opening times.

VISIT

More of Middlewich's fascinating **Roman history** can be seen in the mini museum at the library, and is celebrated by the town's spectacular family friendly annual Roman and Folk and Boat (FAB) festivals.

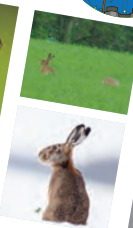
Horse Chestnut
(Aesculus hippocastanum)

Brown Hare
(Lepus europaeus)

NATURE FACT FILE

RANGER DAVE SAYS:

Keep an eye out for hares at Winsford Flashes. Hares live in simple nests above the ground and usually do not live in groups. Hares are generally larger than rabbits, with longer ears and have black markings on their fur.



Common Blue *Cerdayna*



Smooth Newt Male

visit saltscape.co.uk